

XPOD X70

Designation: Residential

Shell cost starting from R822, 250 (Incl. VAT)

•The Units are available in a Steel and Boarded prefabricated floor or concrete raft foundation, dependent on choice and/or site conditions.

Please note that cut & fill not included in costings. (methodology mitigates the need for cut & fill over gentle slopes)

•The Shell costs exclude Sanitaryware and kitchen fit-out. These are available according to a choice of schemes available upon enquiry.

•**Shell price includes a Composite Decked Veranda with louvre covering (Patio sizes as per respective Plans)**

•All Engineering & Architectural services included according to standard schemes offered. All Interior Fittings; Fixtures & Equipment not included

•**Aluminium Framed Windows & Doors, OSB / Plaster Board ceilings and Plaster & paint interior finish.**

•The Pre-fabricated Steel Foundation offers a choice of OSB, Vinyl or Carpet floor finishes. The Raft Foundations offering can be tiled in addition to vinyl/ carpeting finishes

•**The Units have an Insulated Chromadek IBR Roof, available in standard colours.**

•The Units come with an initial Electrical Spec which can either be connected to the respective Power provider or paired with an appropriate alternative energy solution.

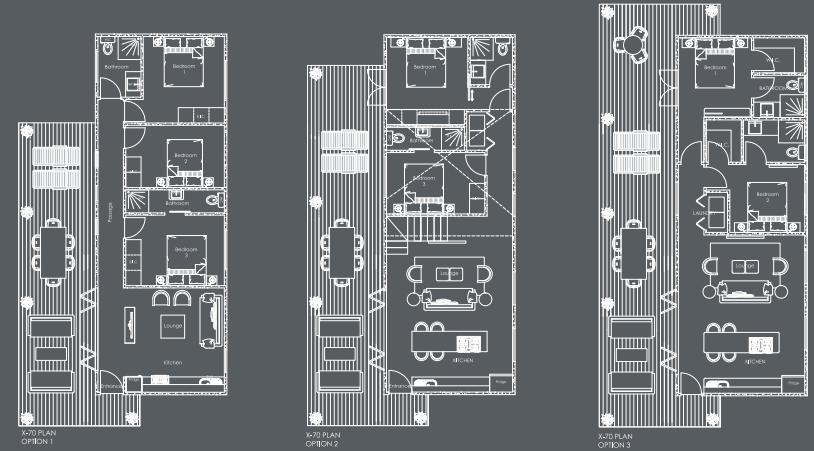
•**The Units are plumbed according to the various plans available, however, will require connecting to preferred Water Supply & Waste Water System**

•Fabrication time? 4-6 weeks? Installation time? 3-5 weeks depending on the type of Foundation?

•**All Dwellings do require Council Submission, Council Submission not included, but service is offered separately.**


•We do offer Garage/storage versions depending on one's requirements.

•**Naturally one can add / mix & match with the various Units on offer via a glazed passage, but this is site dependant and based on where appropriate/ feasible.**



 **Manufacture**
4-6 Weeks

 **Off grid**
Solar/Energy options available

 **Double glazing**
Available

 **Installation**
3-5 Weeks

 **On grid**
Plugs into mains

 **Insulation**
Year round comfort

BIOBUILD

AGRÉMENT SOUTH AFRICA
PROPERTY CONDITION PRODUCT ASSURANCE

While using the thermal and acoustic efficiencies of wood and the structural qualities of cement, Biobuild® provides a unique ecological & economical alternative to traditional building materials.

www.Xpod.co.za

Contact info@multiplyholdings.com

MULTIPLY.

*Prices include manufacture and installation but exclude delivery, T's & C's apply.