

XPOD X50

Designation: Residential

Shell cost starting from R659, 000 (Incl. VAT)

•The Units are available in a Steel and Boarded prefabricated floor or concrete raft foundation, dependent on choice and/or site conditions.

Please note that cut & fill not included in costings. (methodology mitigates the need for cut & fill over gentle slopes)

•The Shell costs exclude Sanitaryware and kitchen fit-out. These are available according to a choice of schemes available upon enquiry.

•**Shell price includes a Composite Decked Veranda with louvre covering (Patio sizes as per respective Plans)**

•All Engineering & Architectural services included according to standard schemes offered. All Interior Fittings; Fixtures & Equipment not included

•**Aluminium Framed Windows & Doors, OSB / Plaster Board ceilings and Plaster & paint interior finish.**

•The Pre-fabricated Steel Foundation offers a choice of OSB, Vinyl or Carpet floor finishes. The Raft Foundations offering can be tiled in addition to vinyl/ carpeting finishes

•**The Units have an Insulated Chromadek IBR Roof, available in standard colours.**

•The Units come with an initial Electrical Spec which can either be connected to the respective Power provider or paired with an appropriate alternative energy solution.

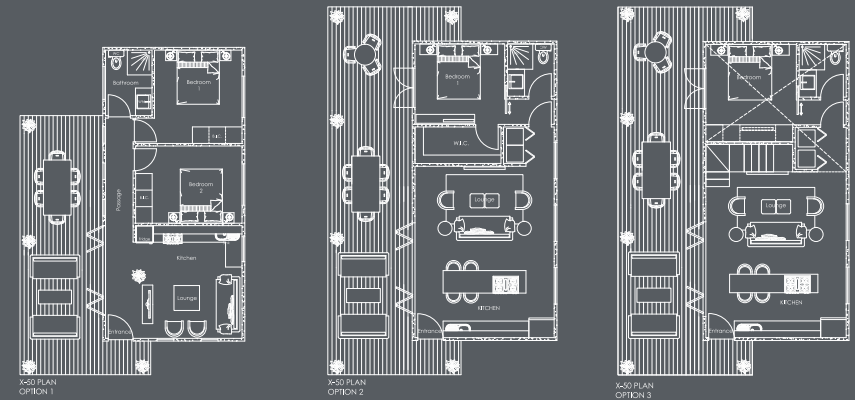
•**The Units are plumbed according to the various plans available, however, will require connecting to preferred Water Supply & Waste Water System**

•Fabrication time? 4-6 weeks? Installation time? 3-5 weeks depending on the type of Foundation?

•**All Dwellings do require Council Submission, Council Submission not included, but service is offered separately.**

•We do offer Garage/storage versions depending on one's requirements.

•**Naturally one can add / mix & match with the various Units on offer via a glazed passage, but this is site dependant and based on where appropriate/ feasible.**



Manufacture

4-6 Weeks



Off grid

Solar/Energy options available



Double glazing

Available



Installation

3-5 Weeks



On grid

Plugs into mains



Insulation

Year round comfort

BIOBUILD

GRÉMENT SOUTH AFRICA
PROPERTY CONSULTANT PRODUCT DEVELOPMENT

While using the thermal and acoustic efficiencies of wood and the structural qualities of cement, Biobuild® provides a unique ecological & economical alternative to traditional building materials.

www.Xpod.co.za

Contact Info@multiplyholdings.com

MULTIPLY.

*Prices include manufacture and installation but exclude delivery, T's & C's apply.